

AlphaShield SoHo Firewall

Why AlphaShield?

- 1- Less than 1 minute setup by a non-technical user
- 2- Makes your computer invisible to hackers
- 3- No configuration, patches or upgrades ever needed
- 4- No software installation
- 5- 100% Guaranteed security* with AlphaGAP Technology
- 6- Stops MSBlast, MyDoom, DoomJuice and similar worms
- 7- Blocks all 65536 ports on your computer
- 8- Stops all third party pop-ups

Why Do You Need Security?

- 1- Broadband connections are always-on and this makes them extremely vulnerable to hackers. "Over 30% of Internet traffic is malicious."
- 2- There is a continued increase in the number of new generation Trojans and Worms on the Internet.
i.e. Fizzer, BugBear, MSBlast, MyDoom, and DoomJuice
- 3- "The number of computer vulnerabilities (home and small office computers) have increased by more than 80% in the last year."
(Aarp.org)
- 4- Home computers are used by intruders to launch attacks against other organizations. (CERT.org)
- 5- "Losses from computer crimes are expected to soar by 25% to \$2.8 billion this year." (Market Researcher TruSecure)

Three Powerful Technologies!

AlphaGAP Technology

With AlphaGAP, access to your computer is managed through a Seamlessly Intelligent Disconnect and Reconnect, either manually or automatically. Once AlphaGAP is activated, it provides 100% Unhackable Internet security or your money back.

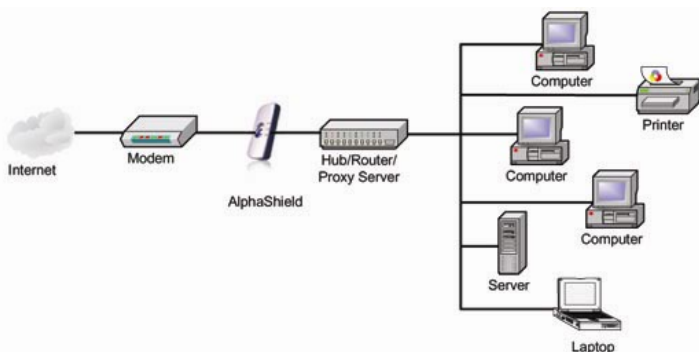
Stealth IP Technology

Stealth Internet Protocol conceals or cloaks your computer from being detected across the Internet or a network, while still allowing you to surf the Internet freely in complete safety.

RPA Technology

Real-time Packet Authorization utilizes an Artificial Intelligence Infrastructure to monitor inbound and outbound data between a connected computer and the Internet. RPA only allows real-time requested information to enter your computer.

An Advanced AlphaShield Installation



15 Second Overview

The AlphaShield Hardware Firewall is a truly unique and powerful device that provides the necessary protection against the growing threat of hackers, third party pop-ups, Trojan worms and information theft. AlphaShield features three powerful technologies: AlphaGAP, Stealth IP and RPA. Together they create the only firewall that Guarantees 100% Unhackable Internet Security*, while still remaining extremely effortless to install.

Disconnect To Protect

According to Stay Safe Online, sponsored by Homeland Security, the most secure way to protect any computer effectively is to physically disconnect it from the Internet. Alphashield makes it easy to disconnect and reconnect your computer from the Internet. When disconnected, the user's computer cannot be hacked, spied on or damaged by Trojan worms such as MSBlast. This feature makes AlphaShield the only firewall product that Guarantees 100% Unhackable Internet Security*.

Mode Switches

Manual (15 min.): Will disconnect the user after 15 minutes of inactivity. AlphaShield will allow your computer to retain its IP address.

Auto: Is the Recommended Mode for use with a Router. Gives the user the flexibility of protecting more than one computer.

Lock: Will disconnect the user after 15 minutes of inactivity. AlphaShield will not allow your computer to communicate with your ISP when disconnected (and may cause you to lose your dynamic IP address).

Data LEDs

Outbound Data LED:

(Located on the Left) Will flash green when valid data packets travel through the AlphaShield. Will flash red when invalid outbound data packets are blocked by AlphaShield.

Connection/Disconnection LED:

(Located in the Center) Will be Solid green when Internet connection is active/connected. Will be Solid red when Internet connection is deactivated/disconnected.

Inbound Data LED:

(Located on the Right) Will flash green when valid data packets travel through the AlphaShield. Will flash red when invalid data packets are blocked by AlphaShield.

A Standard AlphaShield Installation

