

Mini Security Appliance

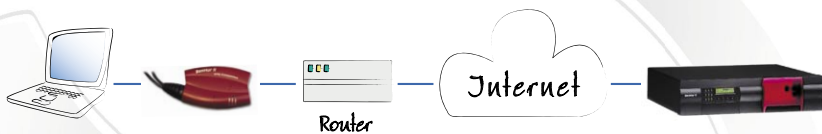
# **BenHur II**

**VPN Companion**



#### **Highest degree of security for your business communication**

- Hardwarebased IP Encryptor and Firewall
- Provides End-to-End authentication for SOHO's, agencies, mobile workers
- completely encrypts internal data communication without loss of speed
- integrates itself automatically into network structures



**network mode of BenHur II VPN Companion: PPPoE mode**  
 In PPPoE mode the local connected client server of BenHur II VPN Companion has to be specified as standard gateway.

## BenHur II Mini Security Appliance

### BenHur II VPN Companion

#### Highlights:

- mini-sized IPSec VPN Firewall solution
- secure connection of external employees to the company network by encrypting the complete internal data communication without loss of speed
- up to 70 Mbit/s VPN encryption performance
- Local & Remote Administration
- integrates itself automatically into network structures
- via the integrated USB power connection, no further main adaptor is needed

Allowing external employees secure access to the company network belongs to the less favoured jobs of a system administrator. Misconfigurations can be a big threat for the company's security policies. BenHur II VPN Companion presents an interesting and effective solution to solve this problem.

BenHur II VPN Companion is a completely new type of miniature security appliance with hardware-based encryption. It has been designed for the protection of internal data communication in both small and large company networks.

Desktop PCs and servers in network structures are protected. At the same time, the laptop PCs of mobile employees and telework stations are assured secure access to the company network.

BenHur II VPN Companion uses a hardened version of the Linux operating system with forward-looking security features. The Intel XScale-based network processor with hardware encryption module guarantees the highest performance with absolute stability.

The BenHur II VPN Companion can be integrated into existing IP structures effortlessly using the stealth mode.

No complicated IP addressing and routing configuration is necessary. Interoperability with other VPN solutions is assured through use of the IPSec standard.

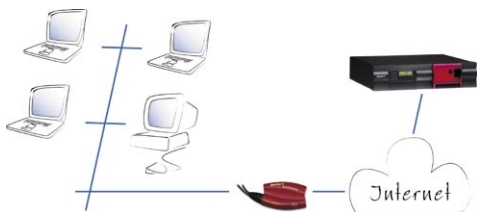
With all these features, BenHur II VPN Companion still has an extremely compact design. This represents a particular advantage for mobile users and telework stations.



**Network mode of BenHur II VPN Companion:**  
 Stealth (factory setting) or Router

**Stealth mode:** no modification of the existing TCP/IP-configuration of the local connected computer is required.

**Router mode:** BenHur II VPN Companion has to be modified as standard gateway on the local connected computer.



**network mode of BenHur II VPN Companion:**  
 Router or PPPoE

**Router:** by internet connection per leased line.

**PPPoE:** by internet connection e.g. per DSL-Modem; so PPPoE-protocol is required.

BenHur II VPN Companion has to be modified as standard gateway on the local connected computer(s).

## Functions

### Internet Access

- xDSL (PPPoE via CHAP, PAP)
- 2 Ethernet 10/100 ports:  
 WAN: RJ45 Socket, LAN: RJ45 Plug

### Firewall Functionality

- Stateful Inspection (IP Tables)
- Stealth mode / transparent IP bridge
- configurable firewall rules
- IP spoofing protection
- TCP synflood protection
- NAT (IP masquerading)
- NAT-T support

### VPN

- IPSec and L2TP Support
- 2 simultaneous VPN tunnels possible (expandable)
- DES encryption
- 3DES **Hardware** encryption with up to 168 bit
- AES **Hardware** encryption with up to 256 bit
- Authentication with X.509v3 certificates
- Authentication with Pre-Shared secret (PSK)
- Multipoint VPN
- RSA, MD5, SHA-1, IKE, PFS
- network to network, network to Host, Host to Host

### Networking

- DHCP server & client
- DNS cache
- PPPoE support

### Remote Administration

- HTTPS, SSH, SNMPv3

### other features

- local administration via web interface
- copy protected file system
- Software integrity check
- Plug & Play installation
- Client OS independent
- no driver installation necessary
- power supply via USB connection or external adaptor (optional available)

### Physical

- Dimensions: (HxWxD) 30x120x80 mm
- Weight: approx 150 g
- power supply: 110 - 240VAC 50/60Hz  
 30mA, 5Vdc 500mA
- Temperature: 0-50 Celsius  
 Humidity: 20-50%

www.pyramid.de

Pyramid Computer GmbH  
 Bötzingen Straße 60  
 D-79111 Freiburg

fon +49 761/4514-150  
 fax +49 761/4514-70

sales.solutions@pyramid.de  
 www.pyramid.de

Your dealer

All logos, brands and product names are trademarks or registered trademarks of their respective owners. Specifications are subject to change without notice. Pyramid is not responsible for omissions or errors in typography or photography. Systems shown may differ from what you receive at time of purchase. Images shown are for illustrative purposes only.